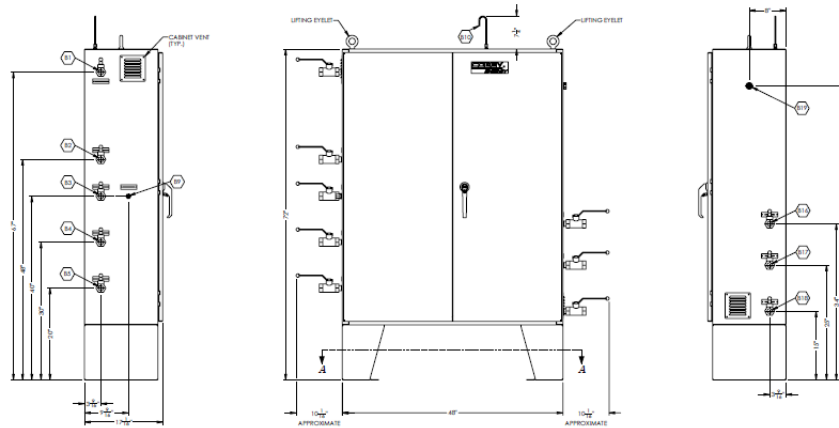


CE-PFP with doors removed for clarity,
layout typical of all sizes



	CE-PFP.50	CE-PFP.75	CE-PFP1.0
Tube Dia.	½"	¾"	1"
Design Pressure (psig)	4,500	4,500	4,500
Cabinet Dimensions (in.)	48" x 72" x 16"		



Cobey Energy supplies and manufactures a full complement of CNG filling station components, including:

- ❖ Natural Gas desiccant dryers
 - Non-regenerative single vessel
 - Manual regenerative, single & dual vessel
 - Auto regenerative, single & dual vessel
- ❖ ASME Section VIII, Div 2 storage spheres
 - 48" ID – 11,993 scf capacity ea.
- ❖ ASME storage tubes
 - 23' lg. – 12,207 scf capacity ea.
 - 11.5' lg. – 5,711 scf capacity ea.
- ❖ CNG fuel dispensers
 - Fast fill
 - Time fill posts

Cobey Energy is an Authorized Packager of:

